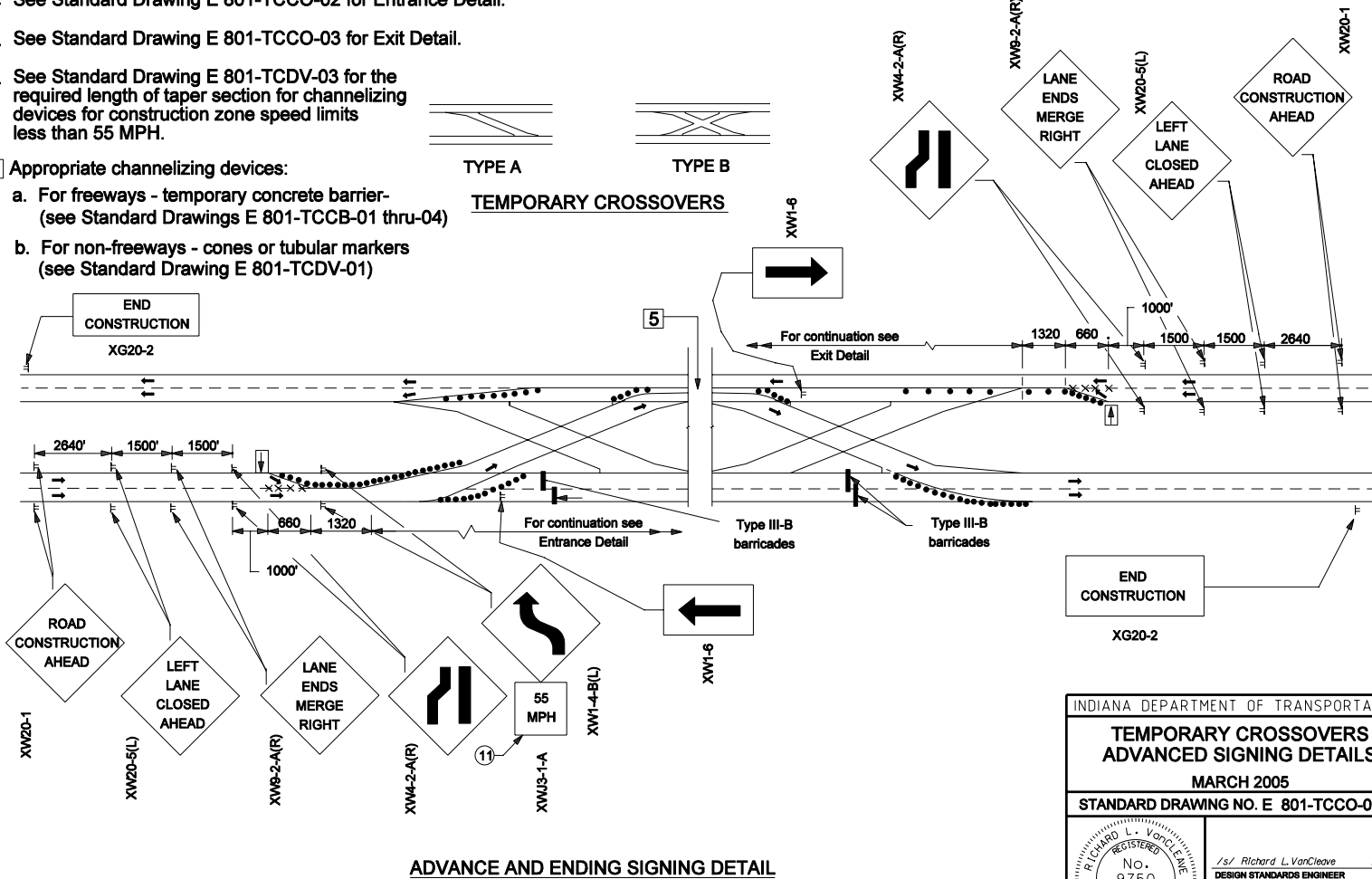
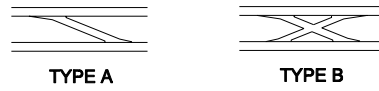


NOTES

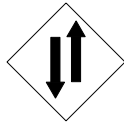
1. See Standard Drawings E801-TCCO-02 and E 801-TCLG-01 for additional general notes and legend.
2. See Standard Drawing E 801-TCCO-02 for Entrance Detail.
3. See Standard Drawing E 801-TCCO-03 for Exit Detail.
4. See Standard Drawing E 801-TCDV-03 for the required length of taper section for channelizing devices for construction zone speed limits less than 55 MPH.

6. Area of Type A crossovers are shown on Standard Drawing E 801-TCLG-01 and area of Type B crossover is shown on Standard Drawing E 801-TCCO-05.

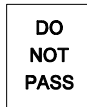
- 5] Appropriate channelizing devices:
- a. For freeways - temporary concrete barrier-
(see Standard Drawings E 801-TCCB-01 thru-04)
 - b. For non-freeways - cones or tubular markers
(see Standard Drawing E 801-TCDV-01)



| | |
|--|--|
| INDIANA DEPARTMENT OF TRANSPORTATION | |
| TEMPORARY CROSSOVERS ADVANCED SIGNING DETAILS | |
| MARCH 2005 | |
| STANDARD DRAWING NO. E 801-TCCO-01 | |
| | /s/ Richard L. VanCleave 3-01-05 DESIGN STANDARDS ENGINEER DATE |
| | /s/ Richard K. Smutzer 3-01-05 CHIEF HIGHWAY ENGINEER DATE |
| DESIGN STANDARDS ENGINEER | |



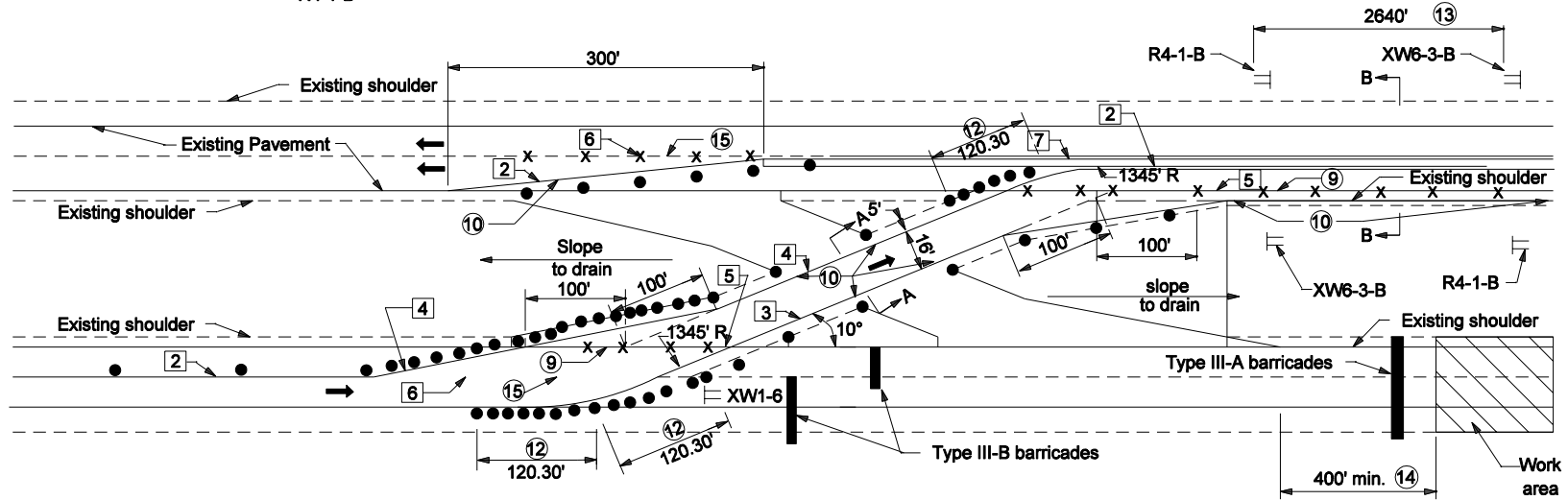
XW6-3-B



R4-1-B



XW1-6



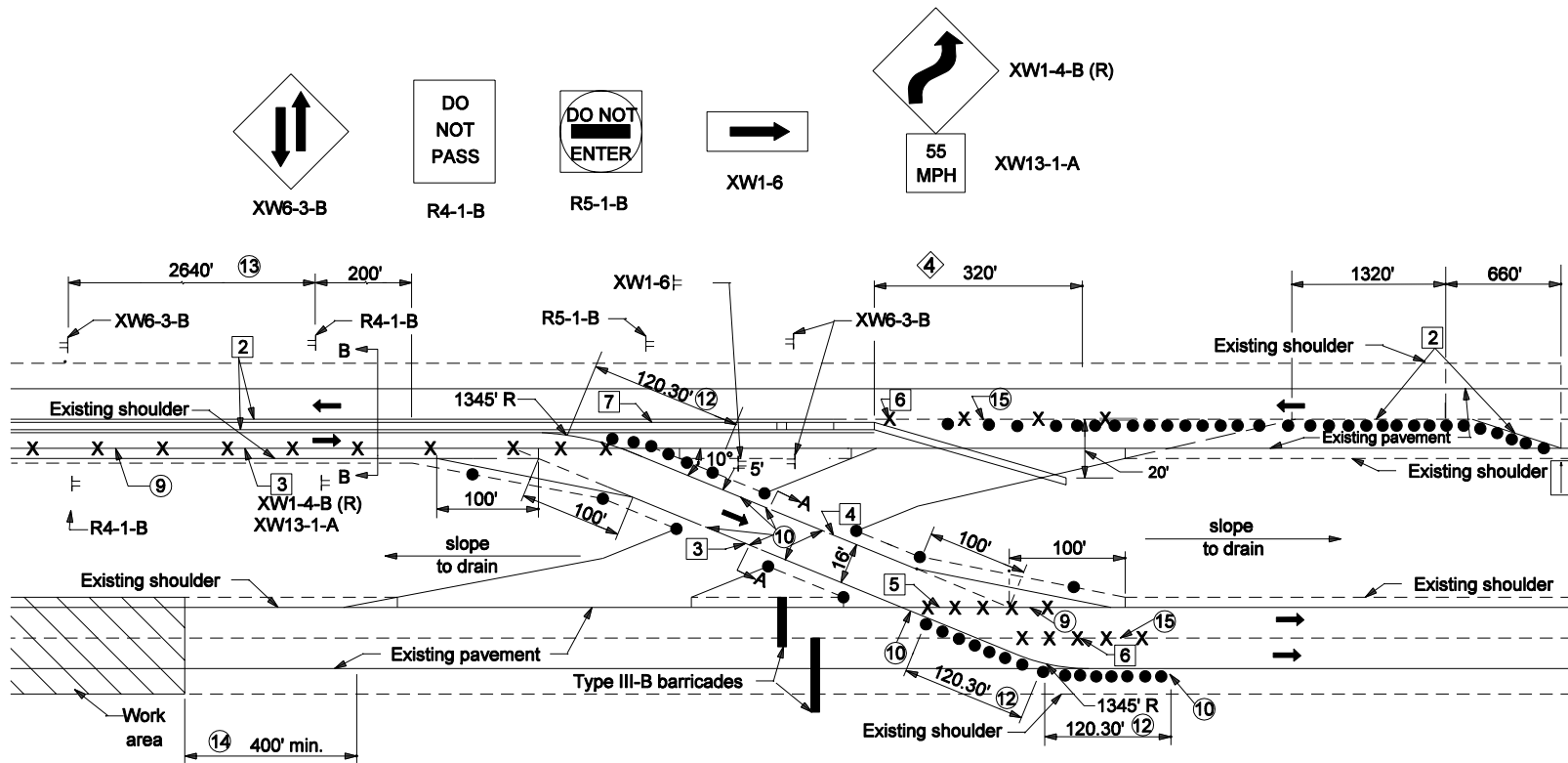
NOTES:

1. Signs XW6-3-B and R4-1-B shall be used only with temporary channelizing devices.
2. See Standard Drawing E 801-TCCO-07 for Sections, A-A , B-B.
- 3 See Standard Drawings E 801-TCDV-04 thru E 801-TCDV-07 for barricade and construction sign mounting information.
- 4 For channelization devices see Standard Drawing E 801-TCDV-01.
- 5 See Standard Drawing E 801-TCDV-03 for required length of taper section for channelizing devices when construction zone speed limits are less than 55 MPH.
- 6 See Standard Drawing E 801-TCLG-01 for General Notes and additional Legend Symbols

LEGEND

- 1 Temporary Pavement Marking, White, 4"
- 2 Temporary Pavement Marking, Yellow, 4"
- 3 Temporary Pavement Marking, White, 8"
- 4 Temporary Pavement Marking, Yellow, 8"
- 5 Line, Solid Yellow, 4", Remove
- 6 Line, Broken White, 4" Remove
- 7 Temporary Concrete Barrier - Freeways
Channelizing Devices - Non-Freeway Multi-lane
Divided Roadways.

| | |
|---|---|
| INDIANA DEPARTMENT OF TRANSPORTATION | |
| TEMPORARY CROSSOVERS ENTRANCE DETAIL | |
| MARCH 2006 | |
| STANDARD DRAWING NO. E 801-TCCO-02 | |
| | /s/ Richard L. VanCleave DESIGN STANDARDS ENGINEER 3-01-06 DATE |
| | /s/ Richard K. Smutzer CHIEF HIGHWAY ENGINEER 3-01-06 DATE |
| DESIGN STANDARDS ENGINEER | |



NOTES

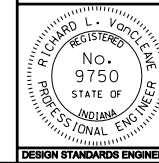
1. Signs XW6-3-B and R4-1-B shall be used only with temporary channelizing devices.
2. See Standard Drawing E 801-TCCO-07 for Sections, A-A, B-B.
3. See Standard Drawing E 801-TC DV-03 for required length of taper section for channelizing devices for construction zone speed limits less than 55 MPH.
4. Taper required when channelizing device is temporary concrete barrier, see Standard Drawing E 801-TCCB-01.
5. See Standard Drawing E 801-TCCO-02 for Legend.
6. See Standard Drawing E 801-TCLG-01 for General Notes and additional Legend Symbols.

INDIANA DEPARTMENT OF TRANSPORTATION

**TEMPORARY CROSSOVERS
EXIT DETAIL**

MARCH 2006

STANDARD DRAWING NO. E 801-TCCO-03



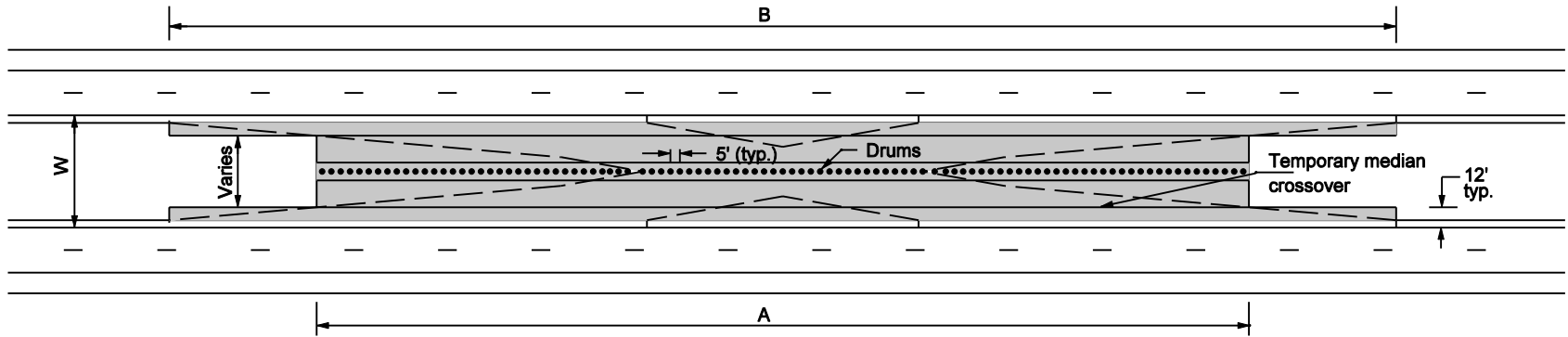
/s/ Richard L. VanCleave 3-01-06
DESIGN STANDARDS ENGINEER DATE

/s/ Richard K. Smutzer 3-01-06
CHIEF HIGHWAY ENGINEER DATE

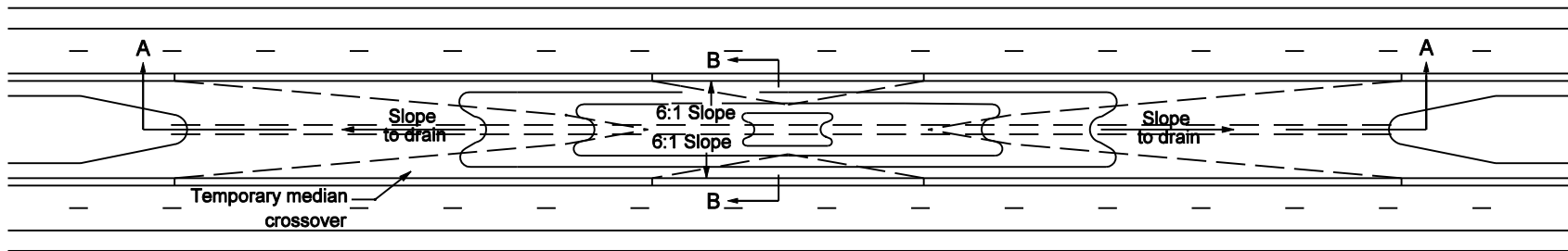
DESIGN STANDARDS ENGINEER

NOTES

1. See Standard Drawing E 801-TCCO-06 for Sections A-A and B-B.
2. Pave to drain.



PAVING LIMITS AND DRUM CLOSURE



EARTH COVER CLOSURE

TYPE B CROSS OVER

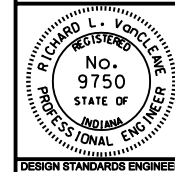
| Median Width W | Dimension A | Dimension B | Area of Paving strips |
|----------------|-------------|-------------|-----------------------|
| Feet | Feet | Feet | SQ. Yards |
| 60 | 564 | 833 | 4310 |
| 50 | 505 | 774 | 3380 |
| 40 | 449 | 719 | 2605 |
| 36 | 427 | 696 | 2326 |
| 30 | 390 | 659 | 1930 |
| 26 | 371 | 640 | 1750 |

INDIANA DEPARTMENT OF TRANSPORTATION

**TEMPORARY CROSSOVER TYPE B
PAVING AND CLOSURE LAYOUT**

SEPTEMBER 2003

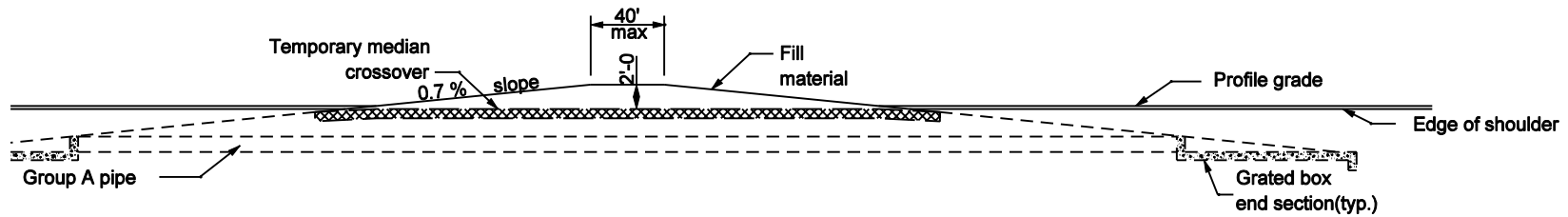
STANDARD DRAWING NO. E 801-TCCO-05



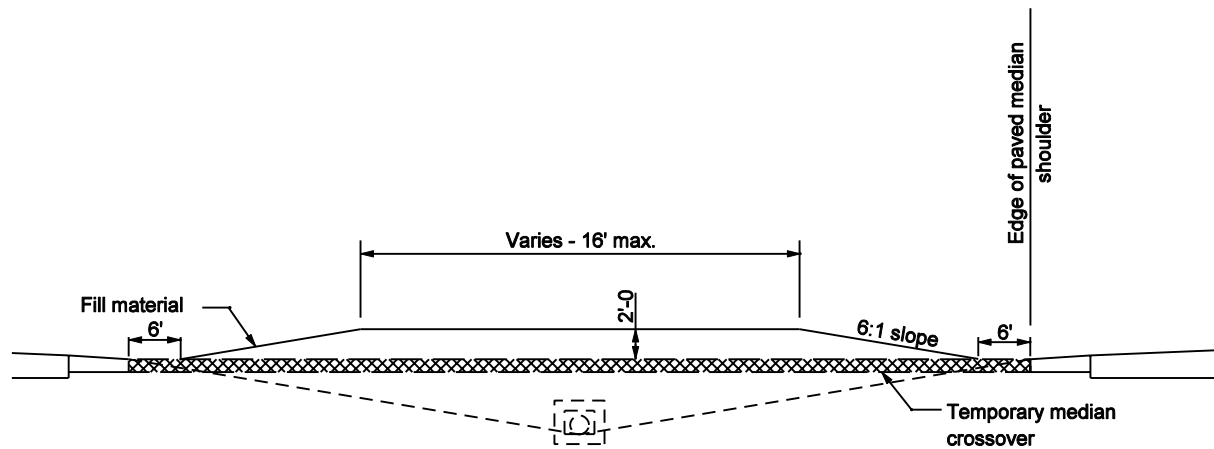
/s/ Richard L. VanCleave 9-02-03
DESIGN STANDARDS ENGINEER DATE

/s/ Richard K. Smutzer 9-02-03
CHIEF HIGHWAY ENGINEER DATE

DESIGN STANDARDS ENGINEER



SECTION A-A

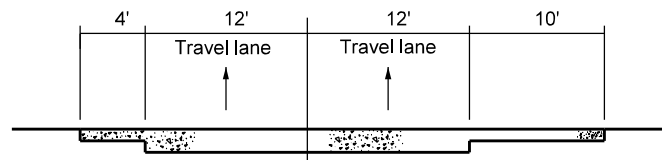
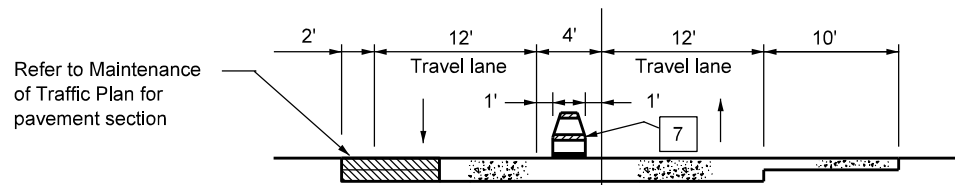
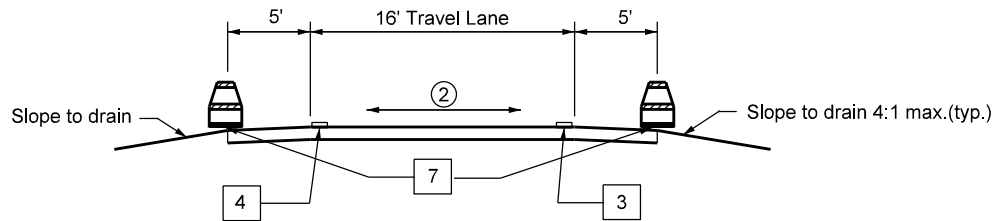


SECTION B-B

NOTES

1. See Standard Drawing E 801-TCCO-05 for temporary crossover paving and closure layout.

| | |
|---------------------------------------|--|
| INDIANA DEPARTMENT OF TRANSPORTATION | |
| CLOSURE OF TEMPORARY CROSSOVER | |
| SEPTEMBER 2003 | |
| STANDARD DRAWING NO. E 801-TCCO-06 | |
| | /s/ Richard L. VanCleave 9-02-03 DESIGN STANDARDS ENGINEER DATE |
| | /s/ Richard K. Smutzer 9-02-03 CHIEF HIGHWAY ENGINEER DATE |
| DESIGN STANDARDS ENGINEER | |



GENERAL NOTES:

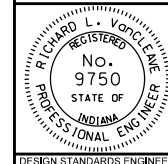
1. See Standard Drawing E 801-TCCO-02 for Legend.
- ② Cross slope varies.
3. Positive drainage shall be provided to prevent ponding on the travel lanes.

INDIANA DEPARTMENT OF TRANSPORTATION

**TEMPORARY CROSSOVER
TYPICAL SECTIONS**

MARCH 2006

STANDARD DRAWING NO. E 801-TCCO-07



/s/ Richard L. VanCleave 3-01-06
DESIGN STANDARDS ENGINEER DATE

/s/ Richard K. Smutzer 3-01-06
CHIEF HIGHWAY ENGINEER DATE

DESIGN STANDARDS ENGINEER